

RE 75 247

27558

SHORT TERM LEASE

THIS INDENTURE OF LEASE made and entered into this 2nd day of October, 1957, by and between SAIM-OTA-MANATEE AIRPORT AUTHORITY, a body politic of the State of Florida, hereinafter referred to as "LESSOR" and NORTHPORT SHOPPING PLAZA, INC., a Florida corporation, hereinafter referred to as "LESSEE".

WITNESSETH:

That for and in consideration of the sum of One Dollar and other good and valuable considerations, and in consideration of the rent to be paid hereinafter unto the Lessor by the Lessee, the Lessor has and by these presents does hereby demise and let unto the Lessee, and the Lessee does hereby lease and take from the Lessor, the following described real estate, situate in Sarasota County, Florida, more particularly described as follows, to-wit:

Tracts One (1) Three (3) Four (4) and Five (5) as per the descriptions on the face of the attached plat or map of NORTHPORT SHOPPING CENTER, as prepared by Crosby Engineering Associates, Inc., dated August 7, 1956, which plat or map is attached hereto and by this reference made a part hereof.

To HAVE AND TO ENJOY the same unto the said Lessee for a term of Ninety-nine (99) years commencing on the 1st day of December, 1957 and ending on the 30th day of November, A. D. 2056, and all upon the covenants, terms and provisions as referred to in that certain Indenture of Lease made and entered into the 2nd day of October, 1957, by and between the Lessor and the Lessee.

AND THE SAID LESSOR in consideration of the further sum of One Dollar and other good and valuable considerations, receipt of which is hereby acknowledged by the Lessor, has given and granted unto the said Lessee, upon the covenants, terms and provisions as referred to in that certain Indenture of Lease made and entered into the 2nd day of October, 1957, by and between the Lessor and Lessee, certain options to lease the following described real estate situate in Sarasota County, Florida, more particularly described as follows:

RE 75 248

Tracts Two (2) Six (6) and Seven (7) as per those descriptions on the face of the attached plat or map of NORTHPORT SHOOTING CENTER, as prepared by Losby Engineering Associates, Inc., dated August 7, 1956, which plat or map is attached hereto and by this reference made a part hereof.

This lease and the aforesaid lease agreement shall be binding upon the respective successors, personal representatives and assigns of the respective parties hereto.

WITNESS our hands and seals this day and year first above written.

Signed, Sealed and delivered in the presence of:

John H. Hall
Booth H. Peterson

SARASOTA-CHARLOTTE AIRPORT AUTHORITY
BY: *Richard H. Hall* (SEAL)
Chairman
ATTEST: *Matt V. Pilcher* (SEAL)
Secretary
"Lessee"

John M. Edick
Scott Register

NORTHPORT SHOOTING PLAZA, INC.
BY: *Richard H. Hall* (SEAL)
Chairman
ATTEST: *Matt V. Pilcher* (SEAL)
Secretary
"Lessee"

STATE OF FLORIDA
COUNTY OF SARASOTA

I HEREBY CERTIFY, that on this 26th day of December, A.D. 1967, before me personally appeared A STERLING HALL and MATT V. PILCHER, respectively Chairman and Secretary of Sarasota-Charlotte Airport Authority, to me known to be the persons described in and who executed the foregoing instrument and severally acknowledged the execution thereof to be their free act and deed as such officers, for the uses and purposes therein mentioned.

WITNESS my signature and official seal at Sarasota, in the County of Sarasota and State of Florida, this day and year last aforesaid.

John M. Edick
Notary Public

My Commission Expires

Notary Public, State of Florida at Large
My commission expires Oct. 30 1969.
Issued by American Surety Co., Inc.

NOTARY PUBLIC
STATE OF FLORIDA
SARASOTA COUNTY

321

STATE OF FLORIDA
COUNTY OF SARASOTA

I, JAMES C. HILTY, Notary of Sarasota A.F.
1957, before me personally appeared James C. Hilty
and Carol E. Smith, respectively
President and Secretary of NORTHPORT SHOPPING PLAZA, INC., a
corporation under the laws of the State of Florida, to me known
to be the persons described in and who executed the foregoing
instrument and severally acknowledged the execution thereof to
be their free act and deed as such officers, or the uses and
purposes therein mentioned.

REC 75 MAR 24 1957

WITNESS my signature and official seal at Sarasota, in
the County of Sarasota and State of Florida, this day and year
last aforesaid.

John M. Hilty
Notary Public

My Commission Expires

NOTARY PUBLIC
STATE OF FLORIDA
SARASOTA COUNTY

TRACTS 1 & 3

COMMENCING AT THE NW COR OF SEC. 1, TWP. 36S, RGE. 17E;
 THENCE N 88°-47'-49" E ALONG THE N'LY BOUNDARY OF THE SAID
 SEC. 1 A DISTANCE OF 1204.00' TO A POINT ON THE CENTER LINE
 OF U. S. HIGHWAY No. 41, SAID CENTER LINE AT THIS POINT
 BEING ON A 1° CURVE AND HAVING A R/W WIDTH OF 120'; THENCE
 S 19°-59'-12" E ALONG THE CHORD OF THE SAID 1° CURVE A DIS-
 TANCE OF 223.03' TO THE P.C. OF SAID 1° CURVE; THENCE
 S 18°-52'-02" E ALONG THE CENTERLINE OF THE SAID U. S.
 HIGHWAY No. 41, A DISTANCE OF 846.40' TO A POINT; THENCE
 N 88°-54'-58" E A DISTANCE OF 42' TO A POINT, SAID POINT
 BEING THE INTERSECTION OF THE E'LY R/W BOUNDARY OF THE 80'
 R/W OF U. S. HIGHWAY No. 41 AND THE N'LY R/W BOUNDARY OF
 THE 100' R/W OF GENERAL SPAATZ BOULEVARD; THENCE S 18°-52'-
 02" E ALONG THE SAID E'LY R/W BOUNDARY OF U. S. HIGHWAY
 No. 41 A DISTANCE OF 105.03' TO THE S'LY R/W BOUNDARY OF
 GENERAL SPAATZ BOULEVARD FOR A P.O.B.; THENCE N 88°-54'-
 58" E ALONG THE SAID S'LY R/W OF GENERAL SPAATZ BLVD. A
 DISTANCE OF 519.57' TO A POINT ON THE CENTERLINE OF GEN-
 ERAL DOUGHER PLACE; THENCE S 1°-05'-02" E AND ALONG THE
 CENTERLINE OF GENERAL DOUGHER PLACE A DISTANCE OF 519.73'
 TO A POINT; THENCE N 88°-54'-58" E AND CONTINUING ALONG
 THE CENTERLINE OF GENERAL DOUGHER PLACE A DISTANCE OF 56'
 TO A POINT; THENCE S 1°-05'-02" E A DISTANCE OF 172' TO A
 POINT; THENCE N 88°-54'-58" E A DISTANCE OF 172' TO A POINT;
 THENCE N 1°-05'-02" W A DISTANCE OF 172.0' TO A POINT;
 SAID POINT BEING ON THE CENTERLINE OF GENERAL DOUGHER
 PLACE; THENCE N 88°-54'-58" E ALONG SAID CENTERLINE OF
 GENERAL DOUGHER PLACE A DISTANCE OF 216.0' TO A POINT;
 SAID POINT BEING ON THE CENTERLINE OF GENERAL TWining
 AVE.; THENCE S 1°-05'-02" E A DISTANCE OF 630.30' TO A
 POINT; THENCE S 88°-19'-48" W A DISTANCE OF 594.21' TO A
 POINT ON THE E'LY R/W BOUNDARY OF U. S. HIGHWAY No. 41,
 SAID HIGHWAY HAVING A R/W OF 80' AT THIS POINT; THENCE
 N 18°-52'-02" W ALONG THE SAID E'LY R/W BOUNDARY OF U. S.
 HIGHWAY No. 41 A DISTANCE OF 1229.10' TO THE POINT OF
 BEGINNING.

Handwritten:
 OK
 R. B. K.

REF 75 MAR 250

TRACT 2

COMMENCING AT THE NW COR OF SEC. 1, TWP. 36S, RGE. 17E;
 THENCE N 88°-47'-49" E ALONG THE N'LY BOUNDARY OF THE SAID
 SEC. 1 A DISTANCE OF 1204.00' TO A POINT ON THE CENTERLINE
 OF U. S. HIGHWAY No. 41; SAID CENTERLINE AT THIS POINT
 BEING ON A 1° CURVE AND HAVING A R/W WIDTH OF 120'; THENCE
 S 19°-59'-12" E ALONG THE CHORD OF THE SAID 1° CURVE A DIS-
 TANCE OF 223.03' TO THE P.C. OF THE SAID 1° CURVE; THENCE
 S 18°-52'-02" E ALONG THE CENTERLINE OF THE SAID U. S. HIGH-
 WAY No. 41 A DISTANCE OF 846.40' TO A POINT; THENCE N 88°-
 54'-58" E A DISTANCE OF 42' TO A POINT; SAID POINT BEING
 THE INTERSECTION OF THE E'LY R/W BOUNDARY OF THE 80' R/W OF
 U. S. HIGHWAY No. 41 AND THE N'LY BOUNDARY OF GENERAL SPAATZ
 BLVD. FOR A P.O.B.; THENCE N 18°-52'-02" W ALONG THE SAID
 E'LY R/W BOUNDARY OF U. S. HIGHWAY No. 41 A DISTANCE OF
 199.64' TO A POINT; THENCE N 36°-32'-48" E A DISTANCE OF
 14.71' TO A POINT; THENCE N 71°-07'-58" E A DISTANCE OF
 155.89' TO A POINT; THENCE N 18°-52'-02" W A DISTANCE OF
 197.45' TO A POINT; THENCE N 36°-32'-48" E A DISTANCE OF
 160.34' TO A POINT; SAID POINT BEING ON A LINE 500' S'LY
 AND PARALLEL TO THE CENTERLINE OF THE NE-OW R/W OF THE
 SARASOTA-BRANTON AIRPORT; THENCE S 18°-52'-02" E A DIS-
 TANCE OF 494.72' TO THE N'LY R/W BOUNDARY OF GENERAL SPAATZ
 BLVD.; THENCE S 88°-54'-58" W ALONG THE SAID N'LY BOUNDARY
 OF GENERAL SPAATZ BLVD. A DISTANCE OF 315.05' TO THE P.O.B.

TRACT 3

BEGINNING.

TRACT 2

COMMENCING AT THE NW COR OF SEC. 1, TWP. 36S, RGE. 17E;
THENCE N $88^{\circ}-47'-49''$ E ALONG THE N'LY BOUNDARY OF THE SAID
SEC. 1 A DISTANCE OF $1204.06'$ TO A POINT ON THE CENTERLINE
OF U. S. HIGHWAY No. 41; SAID CENTERLINE AT THIS POINT
BEING ON A 1° CURVE AND HAVING A R/W WIDTH OF $120'$; THENCE
S $19^{\circ}-59'-12''$ E ALONG THE CHORD OF THE SAID 1° CURVE A DIS-
TANCE OF $223.83'$ TO THE P.C. OF THE SAID 1° CURVE; THENCE
S $18^{\circ}-52'-02''$ E ALONG THE CENTERLINE OF THE SAID U. S. HIGH-
WAY No. 41 A DISTANCE OF $846.40'$ TO A POINT; THENCE N $88^{\circ}-$
 $54'-58''$ E A DISTANCE OF $42'$ TO A POINT; SAID POINT BEING
THE INTERSECTION OF THE E'LY R/W BOUNDARY OF THE $80'$ R/W OF
U. S. HIGHWAY No. 41 AND THE N'LY BOUNDARY OF GENERAL SPAATZ
BLVD. FOR A P.O.B.; THENCE N $18^{\circ}-52'-02''$ W ALONG THE SAID
E'LY R/W BOUNDARY OF U. S. HIGHWAY No. 41 A DISTANCE OF
 $191.61'$ TO A POINT; THENCE N $36^{\circ}-52'-48''$ E A DISTANCE OF
 $14.71'$ TO A POINT; THENCE N $71^{\circ}-07'-58''$ E A DISTANCE OF
 $122.89'$ TO A POINT; THENCE N $18^{\circ}-52'-02''$ W A DISTANCE OF
 $107.49'$ TO A POINT; THENCE N $36^{\circ}-52'-48''$ E A DISTANCE OF
 $160.54'$ TO A POINT; SAID POINT BEING ON A LINE $300'$ S'LY
AND PARALLEL TO THE CENTERLINE OF THE NE-QU QUINCY OF THE
SARASOTA-MADISON AIRPORT; THENCE S $18^{\circ}-52'-02''$ E A DIS-
TANCE OF $494.72'$ TO THE N'LY R/W BOUNDARY OF GENERAL SPAATZ
BLVD.; THENCE S $88^{\circ}-54'-58''$ W ALONG THE SAID N'LY BOUNDARY
OF GENERAL SPAATZ BLVD. A DISTANCE OF $315.07'$ TO THE P.O.B.

TRACT 4

COMMENCING AT THE NW COR OF SEC. 1, TWP. 36S, RGE. 17E;
THENCE N $88^{\circ}-47'-49''$ E ALONG THE N'LY BOUNDARY OF THE SAID
SEC. 1, A DISTANCE OF $1204.06'$ TO A POINT ON THE CENTERLINE
OF U. S. HIGHWAY No. 41, SAID CENTERLINE AT THIS POINT BEING
ON A 1° CURVE AND HAVING A R/W WIDTH OF $120'$; THENCE S $19^{\circ}-$
 $59'-12''$ E ALONG THE CHORD OF THE SAID 1° CURVE A DISTANCE
OF $223.83'$ TO THE P.C. OF SAID 1° CURVE; THENCE S $18^{\circ}-52'-$
 $02''$ E ALONG THE CENTERLINE OF THE SAID U. S. HIGHWAY No. 41
A DISTANCE OF $846.40'$ TO A POINT; THENCE N $88^{\circ}-54'-58''$ E A
DISTANCE OF $42'$ TO A POINT, SAID POINT BEING THE INTERSECTION
OF THE E'LY R/W BOUNDARY OF THE $80'$ R/W OF U. S. HIGHWAY 41
AND THE N'LY R/W BOUNDARY OF THE $100'$ R/W OF GENERAL SPAATZ
BLVD.; THENCE S $19^{\circ}-59'-12''$ E ALONG THE SAID E'LY R/W BOUNDARY
OF U. S. HIGHWAY No. 41 A DISTANCE OF $105.03'$ TO THE S'LY
R/W BOUNDARY OF GENERAL SPAATZ BLVD. FOR A POINT; THENCE
N $88^{\circ}-54'-58''$ E ALONG THE S'LY R/W BOUNDARY OF GENERAL SPAATZ
BLVD. A DISTANCE OF $519.77'$ TO A POINT ON THE CENTERLINE OF
GENERAL DOWNER PLACE; THENCE S $1^{\circ}-05'-02''$ E AND ALONG THE
CENTERLINE OF GENERAL DOWNER PLACE A DISTANCE OF $519.73'$
TO A POINT; THENCE N $88^{\circ}-54'-58''$ E A DISTANCE OF $35'$ TO A
POINT FOR A POINT OF BEGINNING; THENCE CONTINUING N $88^{\circ}-54'-$
 $58''$ E A DISTANCE OF $170'$ TO A POINT; THENCE S $1^{\circ}-05'-02''$ E

SEE 75 REG 251

NW Cor. Sec.
N 00° 47' 42"
1160

1" CURVE

A DISTANCE OF 172' TO A POINT; THENCE S 02° 31' 30" W A DISTANCE OF 172' TO A POINT; THENCE N 1° 05' 02" W A DISTANCE OF 172' TO THE P.O.B.

TRACT 5

COMMENCING AT THE NW COR. OF SEC. 1, Twp. 36S, Rng. 17E; THENCE N 00° 47' 42" E ALONG THE N'LY BOUNDARY OF THE SAID SEC. 1 A DISTANCE OF 1297.00' TO A POINT ON THE CENTERLINE OF U. S. HIGHWAY No. 41, SAID CENTERLINE AT THIS POINT BEING ON A 1" CURVE AND HAVING A R/W WIDTH OF 120'; THENCE S 12° 32' 12" E ALONG THE CHORD OF THE SAID 1" CURVE A DISTANCE OF 223.03' TO THE P.C. OF SAID 1" CURVE; THENCE S 10° 32' 02" E ALONG THE CENTERLINE OF THE SAID U. S. HIGHWAY No. 41, A DISTANCE OF 616.00' TO A POINT; THENCE N 00° 31' 30" E A DISTANCE OF 42' TO A POINT, SAID POINT BEING THE INTERSECTION OF THE E'LY R/W BOUNDARY OF THE 50' R/W OF U. S. HIGHWAY No. 41 AND THE N'LY R/W BOUNDARY OF THE 100' R/W OF GENERAL SPARTZ BLVD.; THENCE S 10° 32' 02" E ALONG THE SAID E'LY R/W BOUNDARY OF U. S. HIGHWAY No. 41 A DISTANCE OF 123.00' TO THE S'LY R/W BOUNDARY OF GENERAL SPARTZ BLVD.; THENCE N 00° 31' 30" E ALONG THE SAID S'LY R/W OF GENERAL SPARTZ BLVD. A DISTANCE OF 519.73' TO A POINT ON THE CENTERLINE OF GENERAL TURNING PLACE FOR A P.O.B.; THENCE CONTINUE N 00° 31' 30" E A DISTANCE OF 470.00' TO A POINT; SAID POINT BEING ON THE CENTERLINE OF GENERAL TURNING AVE., THENCE S 1° 05' 02" E ALONG SAID CENTERLINE OF GENERAL TURNING AVE., A DISTANCE OF 519.73' TO A POINT; THENCE S 00° 31' 30" W A DISTANCE OF 470.00' TO A POINT; THENCE N 1° 05' 02" W A DISTANCE OF 519.73' TO THE P.O.B.

TRACT 6

COMMENCING AT THE NW COR. OF SEC. 1, Twp. 36S, Rng. 17E; THENCE N 00° 47' 42" E ALONG THE N'LY BOUNDARY OF THE SAID SEC. 1 A DISTANCE OF 1297.00' TO A POINT ON THE CENTERLINE OF U. S. HIGHWAY No. 41, SAID CENTERLINE AT THIS POINT BEING ON A 1" CURVE AND HAVING A R/W WIDTH OF 120'; THENCE S 12° 32' 12" E ALONG A CHORD OF THE SAID 1" CURVE A DISTANCE OF 223.03' TO THE P.C. OF THE SAID 1" CURVE; THENCE S 10° 32' 02" E ALONG THE CENTERLINE OF THE SAID U. S. HIGHWAY No. 41 A DISTANCE OF 616.00' TO A POINT; THENCE N 00° 31' 30" E A DISTANCE OF 42' TO A POINT; SAID POINT BEING THE INTERSECTION OF THE E'LY R/W BOUNDARY OF THE 50' R/W OF U. S. HIGHWAY No. 41 AND THE N'LY BOUNDARY OF GENERAL SPARTZ BLVD. FOR A POINT; THENCE N 10° 32' 02" W ALONG THE SAID E'LY R/W BOUNDARY OF U. S. HIGHWAY No. 41 A DISTANCE OF 191.00' TO A POINT; THENCE N 36° 32' 40" E A DISTANCE OF 14.71' FOR A POINT OF BEGINNING; THENCE CONTINUE N 36° 32' 40" E A DISTANCE OF 109.33' FOR A POINT; THENCE S 10° 32' 02" E A DISTANCE OF 107.49' FOR A POINT; THENCE S 71° 07' 58" W A DISTANCE OF 173.00' TO THE P.O.B.

TRACT 7

COMMENCING AT THE NW COR. OF SEC. 1, Twp. 36S, Rng. 17E; THENCE N 00° 47' 42" E ALONG THE N'LY BOUNDARY OF THE SAID SEC. 1 A DISTANCE OF 1297.00' TO A POINT ON THE CENTERLINE OF U. S. HIGHWAY No. 41, SAID CENTERLINE AT THIS POINT BEING ON A 1" CURVE AND HAVING A R/W WIDTH OF 120'; THENCE S 12° 32' 12" E ALONG THE CHORD OF THE SAID 1" CURVE A DISTANCE OF 223.03' TO THE P.C. OF SAID 1" CURVE; THENCE S 10° 32' 02" E ALONG THE CENTERLINE OF THE SAID U. S. HIGHWAY No. 41, A DISTANCE OF 616.00' TO A POINT; THENCE N 00° 31' 30" E A DISTANCE OF 42' TO A POINT, SAID POINT BEING THE INTERSECTION OF THE E'LY R/W BOUNDARY OF THE 50' R/W OF U.S. HIGHWAY No. 41 AND THE N'LY R/W BOUNDARY OF THE 100' R/W OF GENERAL SPARTZ BLVD.; THENCE N 00° 31' 30" E AND CONTINUING ALONG N'LY R/W OF GENERAL SPARTZ BLVD. A DISTANCE OF 315.00' TO A POINT FOR A P.O.B.; THENCE N 00° 31' 30" E AND CONTINUING ALONG SAID N'LY R/W OF GENERAL SPARTZ BLVD. A DISTANCE OF 606.00' TO A POINT ON THE CENTERLINE OF GENERAL TURNING AVENUE, SAID GENERAL TURNING AVE. HAVING A R/W OF 50' AT THIS POINT; THENCE N 1° 05' 02" W ALONG SAID CENTERLINE A DISTANCE OF 400.00' TO A POINT; THENCE S 00° 31' 30" W A DISTANCE OF 610.00' TO A POINT; THENCE S 10° 32' 02" E A DISTANCE OF 400.00' TO THE P.O.B.

CERTIFICATE OF SURVEYOR:
I, THE UNDERSIGNED REGISTERED LAND SURVEYOR, HEREBY CERTIFY THAT THE PLAT HEREWITH IS A TRUE REPRESENTATION OF THE LAND SHOWN AND DESCRIBED, AND THAT ALL ANGLE, MONUMENTS AND DIMENSIONS ARE CORRECT TO THE BEST OF MY KNOWLEDGE AND BELIEF.

J.V. Mosby
J.V. MOSBY
REGISTERED LAND SURVEYOR

WAY NO. 41 AND THE N^oLY R/W BOUNDARY OF THE 100' R/W OF GENERAL SPARTE BLVD.; THENCE S 18°-32'-02" E ALONG THE SAID E'LY R/W BOUNDARY OF U. S. HIGHWAY NO. 41 A DISTANCE OF 105.03' TO THE S'LY R/W BOUNDARY OF GENERAL SPARTE BLVD.; THENCE N 88°-31'-50" E ALONG THE SAID S'LY R/W OF GENERAL SPARTE BLVD. A DISTANCE OF 319.57' TO A POINT ON THE CENTERLINE OF GENERAL DENNIS PLACE; FOR A P.O.B.; THENCE CONTINUE N 88°-31'-50" E A DISTANCE OF 420.0' TO A POINT; SAID POINT BEING ON THE CENTERLINE OF GENERAL TURNING AVE.; THENCE S 1°-05'-02" E ALONG SAID CENTERLINE OF GENERAL TURNING AVE.; A DISTANCE OF 319.73' TO A POINT; THENCE S 88°-31'-50" W A DISTANCE OF 420.0' TO A POINT; THENCE N 1°-05'-02" W A DISTANCE OF 319.73' TO THE P.O.B.

TRACT 6

COMMENCING AT THE NW COR OF SEC. 1, Twp. 36S, Rce. 17E; THENCE N 88°-31'-50" E ALONG THE N'LY BOUNDARY OF THE SAID SEC. 1 A DISTANCE OF 120.00' TO A POINT ON THE CENTERLINE OF U. S. HIGHWAY NO. 41, SAID CENTERLINE AT THIS POINT BEING ON A 1° CURVE AND HAVING A R/W WIDTH OF 120'; THENCE S 18°-32'-12" E ALONG THE CHORD OF THE SAID 1° CURVE A DISTANCE OF 223.03' TO THE P.C. OF THE SAID 1° CURVE; THENCE S 18°-32'-02" E ALONG THE CENTERLINE OF THE SAID U. S. HIGHWAY NO. 41 A DISTANCE OF 646.40' TO A POINT; THENCE N 88°-31'-50" E A DISTANCE OF 42' TO A POINT; SAID POINT BEING THE INTERSECTION OF THE E'LY R/W BOUNDARY OF THE 60' R/W OF U. S. HIGHWAY NO. 41 AND THE N'LY BOUNDARY OF GENERAL SPARTE BLVD. FOR A POINT; THENCE N 18°-32'-02" W ALONG THE SAID E'LY R/W BOUNDARY OF U. S. HIGHWAY NO. 41 A DISTANCE OF 191.64' TO A POINT; THENCE N 36°-32'-40" E A DISTANCE OF 14.71' FOR A POINT OF BEGINNING; THENCE CONTINUE N 36°-32'-40" E A DISTANCE OF 109.35' FOR A POINT; THENCE S 18°-32'-02" E A DISTANCE OF 107.49' FOR A POINT; THENCE S 71°-07'-50" W A DISTANCE OF 177.09' TO THE P.O.B.

TRACT 7

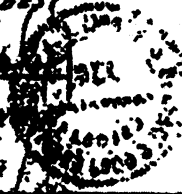
SEE 75 INC 253

SEE 75 INC 255

COMMENCING AT THE NW COR OF SEC. 1, Twp. 36S, Rce. 17E; THENCE N 88°-31'-50" E ALONG THE N'LY BOUNDARY OF THE SAID SEC. 1 A DISTANCE OF 120.00' TO A POINT ON THE CENTERLINE OF U. S. HIGHWAY NO. 41, SAID CENTERLINE AT THIS POINT BEING ON A 1° CURVE AND HAVING A R/W WIDTH OF 120'; THENCE S 18°-32'-12" E ALONG THE CHORD OF THE SAID 1° CURVE A DISTANCE OF 223.03' TO THE P.C. OF SAID 1° CURVE; THENCE S 18°-32'-02" E ALONG THE CENTERLINE OF THE SAID U. S. HIGHWAY NO. 41, A DISTANCE OF 646.40' TO A POINT; THENCE N 88°-31'-50" E A DISTANCE OF 42' TO A POINT, SAID POINT BEING THE INTERSECTION OF THE E'LY R/W BOUNDARY OF THE 60' R/W OF U. S. HIGHWAY NO. 41 AND THE N'LY R/W BOUNDARY OF THE 100' R/W OF GENERAL SPARTE BLVD.; THENCE N 88°-31'-50" E AND CONTINUING ALONG N'LY R/W OF GENERAL SPARTE BLVD. A DISTANCE OF 319.57' TO A POINT FOR A P.O.B.; THENCE N 88°-31'-50" E AND CONTINUING ALONG SAID N'LY R/W OF GENERAL SPARTE BLVD. A DISTANCE OF 620.50' TO A POINT ON THE CENTERLINE OF GENERAL TURNING AVENUE, SAID GENERAL TURNING AVE. HAVING A R/W OF 30' AT THIS POINT; THENCE N 1°-05'-02" W ALONG SAID CENTERLINE A DISTANCE OF 420.0' TO A POINT; THENCE S 18°-32'-02" W A DISTANCE OF 619.83' TO A POINT; THENCE S 18°-32'-02" E A DISTANCE OF 420.07' TO THE P.O.B.

CERTIFICATE OF SURVEYOR:
 I, THE UNDERSIGNED REGISTERED LAND SURVEYOR, HEREBY CERTIFY THAT THE PLAT HEREWITH IS A TRUE REPRESENTATION OF THE LAND SHOWN AND DESCRIBED, AND THAT ALL ANGLES, MONUMENTS AND DIMENSIONS ARE CORRECT TO THE BEST OF MY KNOWLEDGE AND BELIEF.

[Signature]
 J. V. MESSER,
 REGISTERED LAND SURVEYOR,
 FLA. CERT. NO. 589



75 DE 254

NW Cor. Sec. 1, TWP. 36S, RGE 17E

N 85° 47' 45" E

NW Cor. NE 1/4 - NW 1/4 Sec. 1

SECTION LINE 1

1" CURVE

TRACT NE 6

NE 1/4 of NW 1/4 Sec. 1

S 85° 24' 35" W
514.85'

TRACT NE 7

TRACT NE 2

GENERAL SPAATZ BLVD.

CITY LIMITS
1/4 - 1/4 LINE

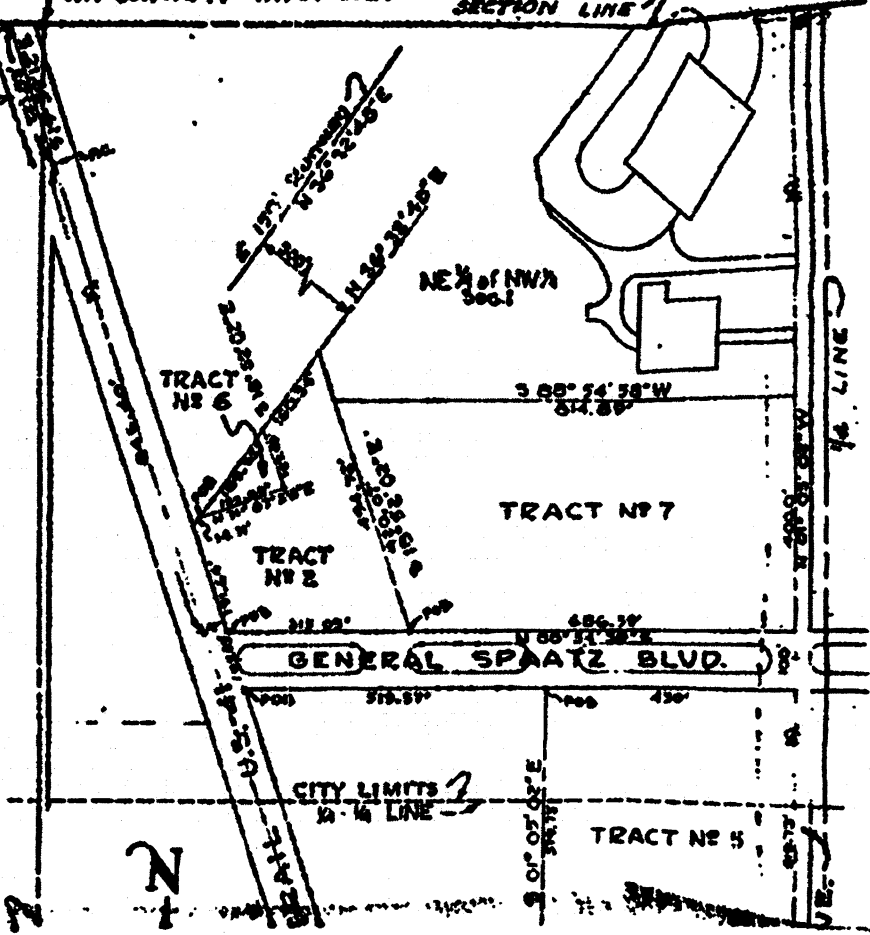
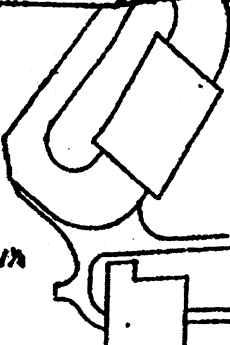
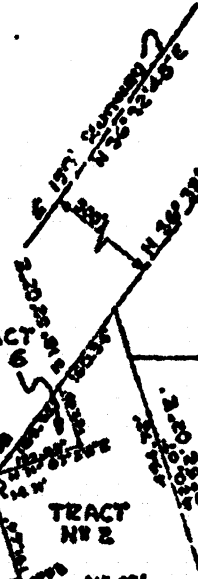
TRACT NE 5

N

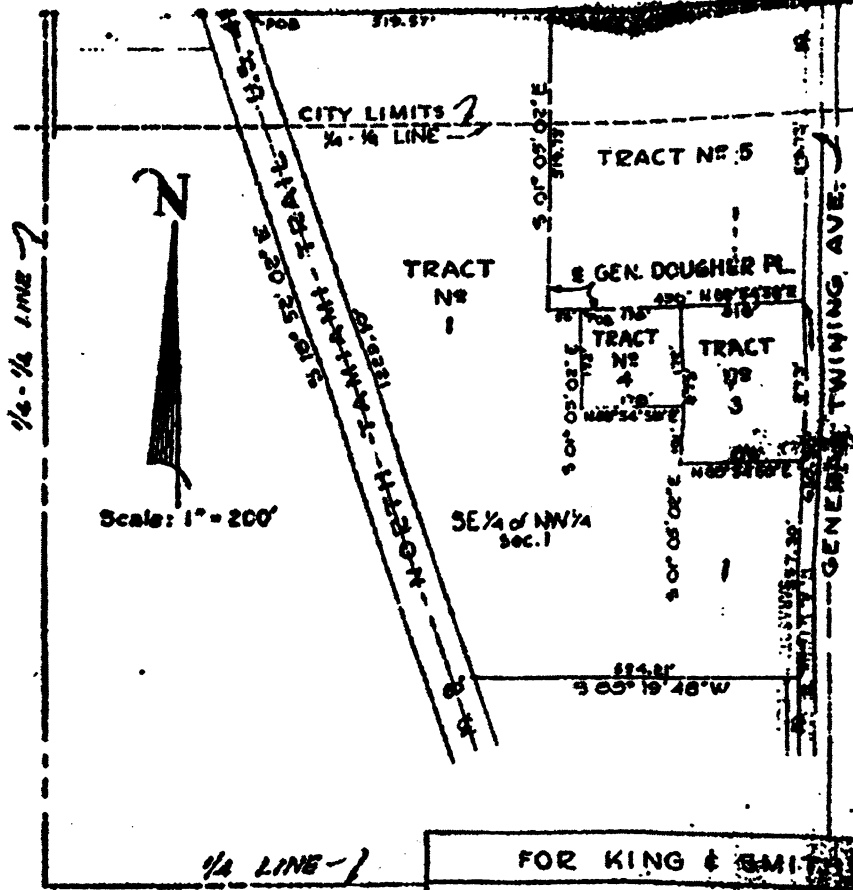
1/4 LINE

9' OF DIST. OF E. SW. 1/4

U.S.



75 255



FOR KING & SMITH
 PLAT OF NORTHPORT SHORING
 SARASOTA, SARASOTA CO. FLA.
 MOSBY ENGINEERING ASSOCIATES
 2259 DEC RIDGE ROAD SARASOTA
 SCALE: 1" = 200'
 DRAWN BY: PGP
 JOB NO: 409

54

75 REG 256

Cor. Sec. 1, TWP 30 N RGE 17 E
NW 1/4 Cor. NE 1/4 - NW 1/4 Sec. 1

SECTION LINE

1° CURVE

5.150' BURNELL
N 30° 22' 45" E
2.705' 21.1
N 30° 22' 45" E

NE 1/4 of NW 1/4
Sec. 1

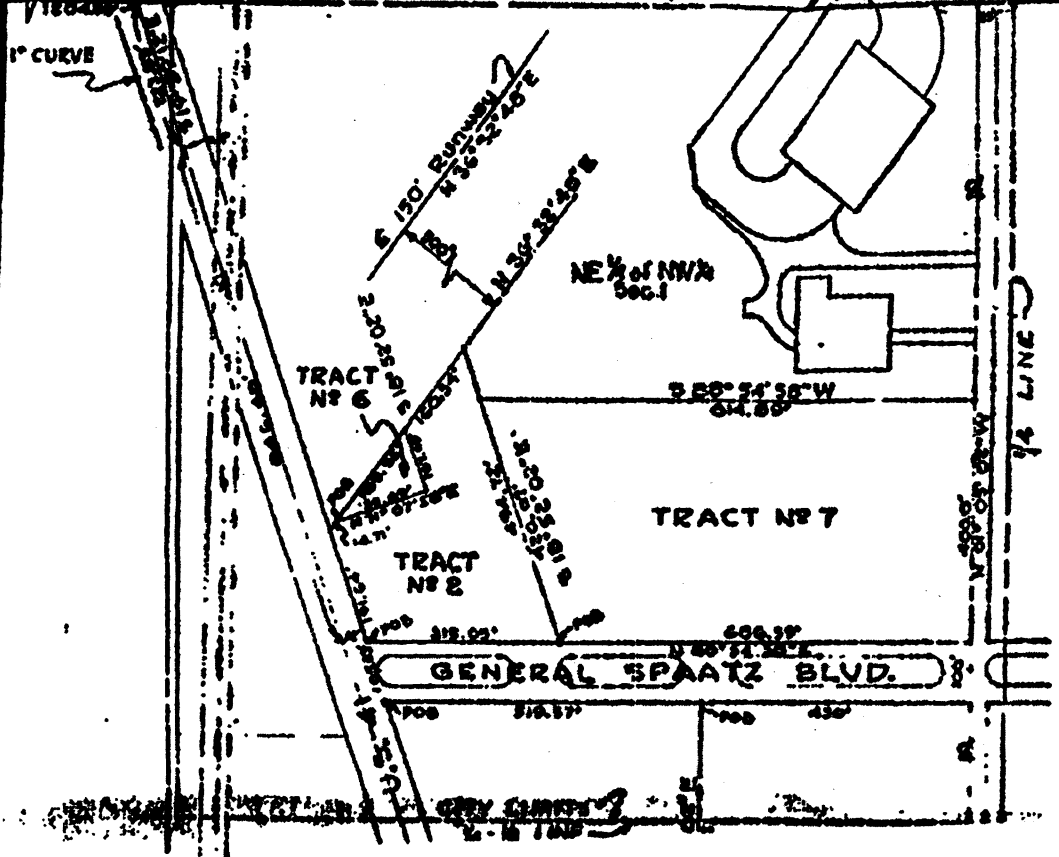
TRACT
NO 6

TRACT
NO 7

TRACT
NO 2

GENERAL SPATZ BLVD.

1/4 LINE



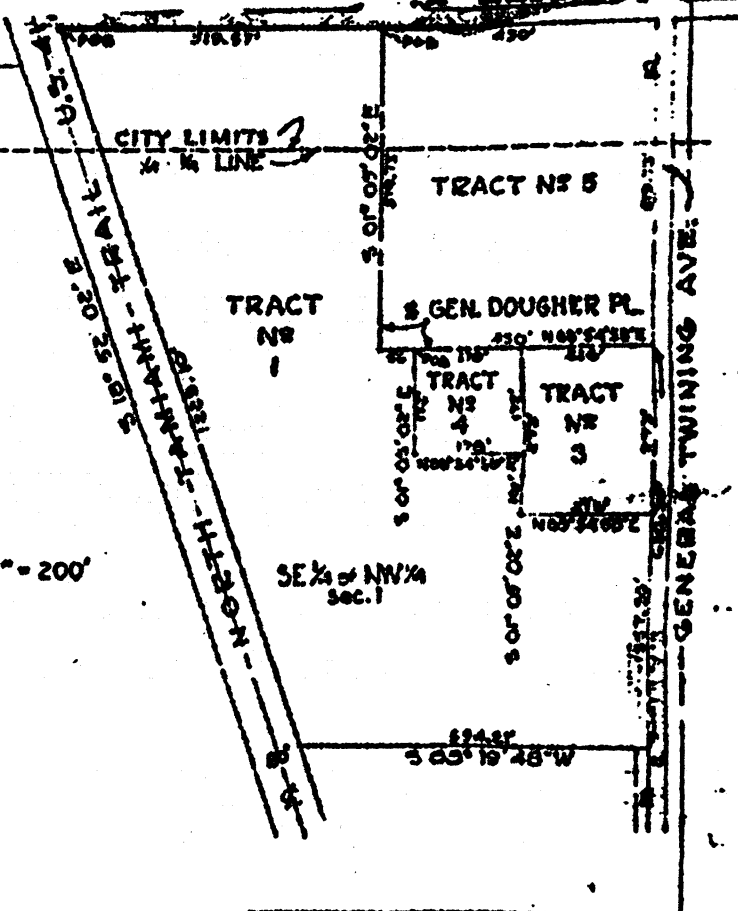
255

1/4 - 1/4 LINE



Scale: 1" = 200'

1/4 LINE



RE 75 RE 297

JAN 9 1968

FOR KING & SMITH

PLAT OF NORTHPORT SHOPPING CENTER
SARASOTA, SARASOTA CO, FLA.

MOSEY ENGINEERING ASSOCIATES, INC.
2877 BEE RIDGE ROAD SARASOTA, FLA.

SCALE: 1" = 200' DATE: 6-7-68
DRAWN BY: PGB APPROVED:
JOB NO: 409

407

[THIS PAGE INTENTIONALLY LEFT BLANK]